

L.E.S. Series HW "Scotch Box" Boilers

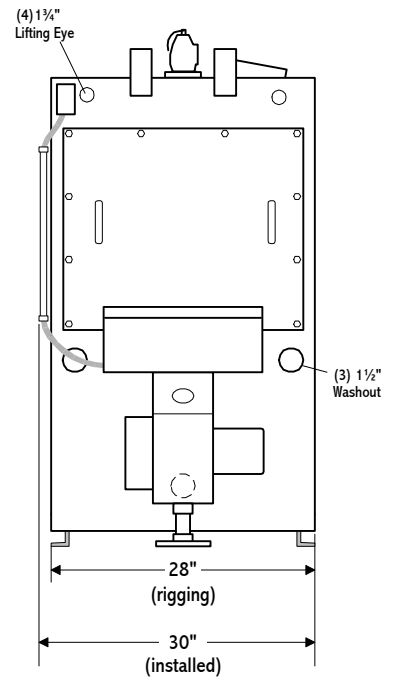
Represented by Meilner Mechanical Sales 19 W. College Drive Arlington Heights, IL 60004-1954 TEL: 847-253-1040 FAX: 847-253-1332

3-Pass Wetback Boilers 30, 40, or 80 PSI Hot Water 83% Efficiency 5 Year Vessel/Refractory Warranty
 Horizontal firetube design with lightweight (70 lb. maximum) bolted/gasketed maintenance covers.
 Rear manway provides easy access to furnace and tubes without burner removal.
 28" minimum width with lifting eyes at top corners and tube removal from front or rear.
 Complete boiler/burner packages meet UL, FM, and ASME CSD-1B requirements for natural gas firing.

Size "A" RATINGS // DATA // DIMENSIONS

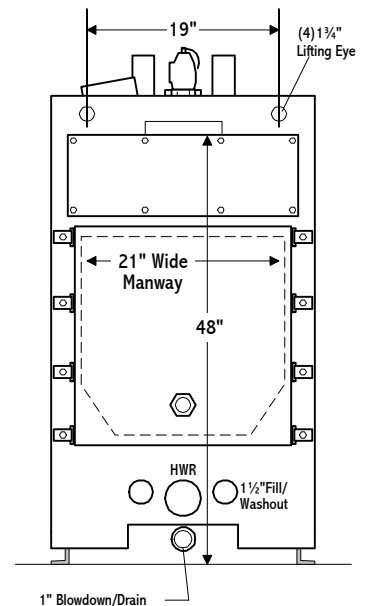
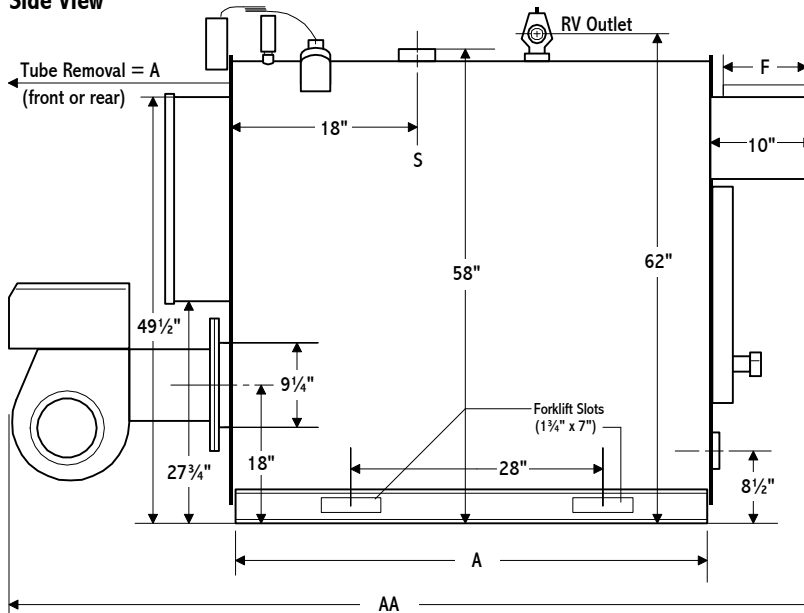
Model: HW-	580	800	1000	1200	1500
Input					
Gas (MB/CF) CFH	695	960	1200	1440	1805
Oil (140MB/Gal) GPH	5.0	6.9	8.6	10.3	12.9
Output					
MBH	580	800	950	1200	1500
Boiler Horsepower	17	24	28	36	45
Burner Data					
Gas Burner Motor HP	.25	.33	.33	.33	.5
Standard Gas Connection Size	1	1	1	1¼	1¼
Minimum Inlet Gas for Std Train	6"	7"	7"	7"	7"
Oil Burner Motor HP	.33	.5	.5	.75	1.0
Boiler Data					
Furnace Vol. (CU.FT.)	4.9	6.5	6.5	8.1	9.7
Water Cap. (Gal; Full)	77	101	96	119	142
Dry Weight (LBS)	1250	1525	1600	1875	2175
Flooded Weight (LBS)	1890	2364	2399	2870	3357
Dimensions in Inches					
A Skid Length	.33	.5	.5	.75	1
AA Overall Length	29.25	39	39	48.75	58.5
F Flue Connection Size	6	8	8	8	8
Drain Valve Size	1	1	1¼	1¼	1¼
Relief Valve Outlet	¾/1	¾/1	1/1¼	1/1¼	1/1¼
R Return Size (NPT)	2	2	3	3	3
S Supply Size (NPT)	2	2	3	3	3

Front View



30 psi construction shown. Consult factory for high pressure weights, flue connections.

Side View



Rear View

L.E.S. Series HW "Scotch Box" Boilers

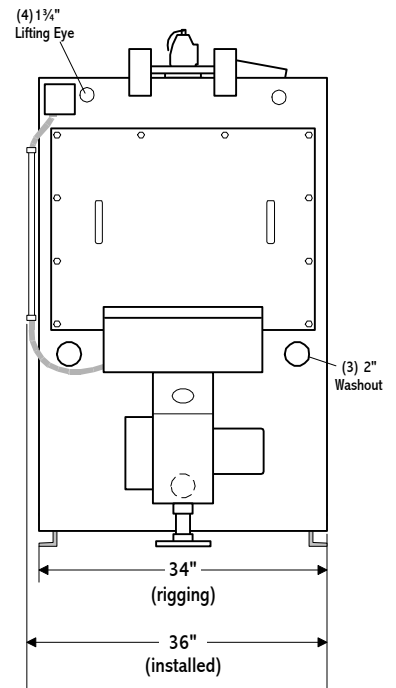
Represented by Meilner Mechanical Sales 19 W. College Drive Arlington Heights, IL 60004-1954 TEL: 847-253-1040 FAX: 847-253-1332

3-Pass Wetback Boilers 30, 40, or 80 PSI Hot Water 83% Efficiency 5 Year Vessel/Refractory Warranty
 Horizontal firetube design with lightweight (80 lb. maximum) bolted/gasketed maintenance covers.
 Rear manway provides easy access to furnace and tubes without burner removal.
 34" minimum width with lifting eyes at top corners and tube removal from front or rear.
 Complete boiler/burner packages meet UL, FM, and ASME CSD-1B requirements for natural gas firing.

Size "B" RATINGS // DATA // DIMENSIONS

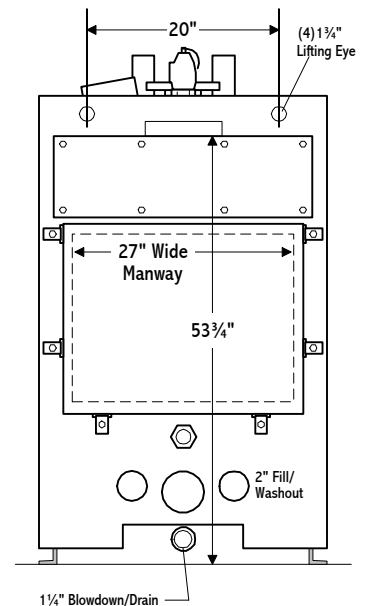
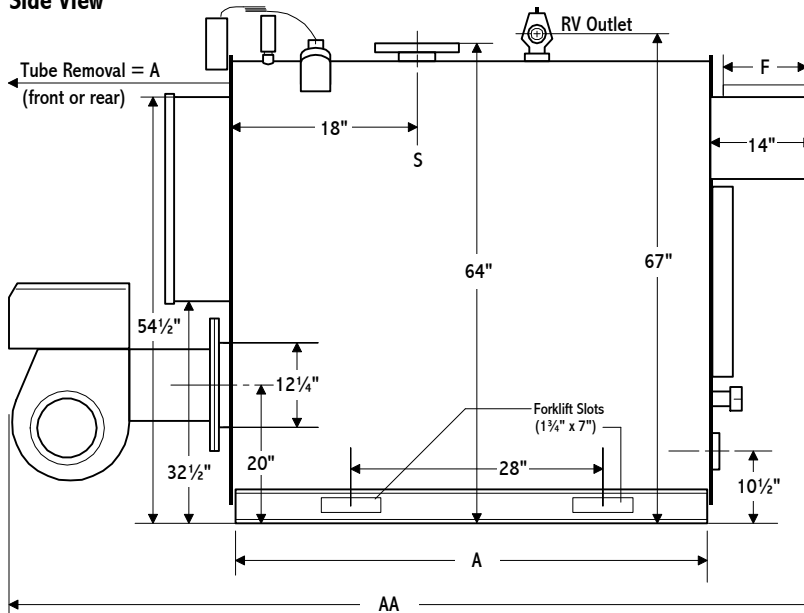
Model: HW-	1800	2070	2200
Input			
Gas (MB/CF) CFH	2165	2490	2650
Oil (140MB/Gal) GPH	15.5	17.8	18.9
Output			
MBH	1800	2070	2200
Boiler Horsepower	54	62	66
Burner Data			
Gas Burner Motor HP	.5	1.0	1.0
Standard Gas Connection Size	1½	1½	2
Minimum Inlet Gas for Std Train	7"	8"	7"
Oil Burner Motor HP	1.0	1.5	1.5
Boiler Data			
Furnace Vol. (CU.FT.)	13.6	15.8	15.8
Water Cap. (Gal; Full)	197	229	229
Dry Weight (LBS)	2775	3175	3175
Flooded Weight (LBS)	4419	5085	5085
Dimensions in Inches			
A Skid Length	1	1.5	1.5
AA Overall Length	58.5	68.25	68.25
F Flue Connection Size	10	10	10
Drain Valve Size	1¼	1¼	1¼
Relief Valve Outlet	1¼/1½	1¼/1½	1¼/1½
R Return Size (NPT)	4	4	4
S Supply Size (Flange)	4	4	4

Front View



30 psi construction shown. Consult factory for high pressure weights, flue connection height.

Side View



Rear View

L.E.S. Series HW "Scotch Box" Boilers

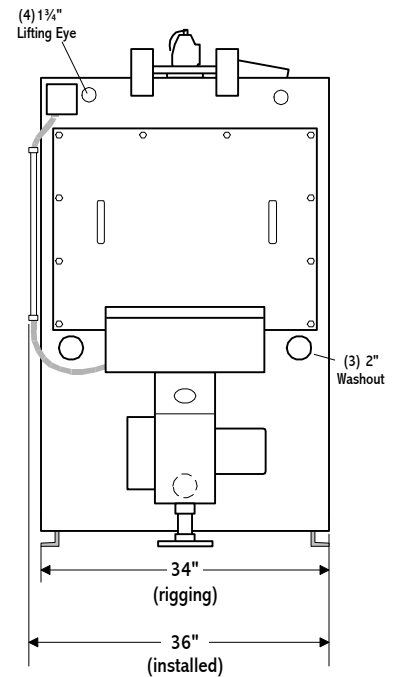
Represented by Meilner Mechanical Sales 19 W. College Drive Arlington Heights, IL 60004-1954 TEL: 847-253-1040 FAX: 847-253-1332

3-Pass Wetback Boilers 30, 40, or 80 PSI Hot Water 83% Efficiency 5 Year Vessel/Refractory Warranty
 Horizontal firetube design with lightweight (85 lb. maximum) bolted/gasketed maintenance covers.
 Rear manway provides easy access to furnace and tubes without burner removal.
 34" minimum width with lifting eyes at top corners and tube removal from front or rear.
 Complete boiler/burner packages meet UL, FM, and ASME CSD-1B requirements for natural gas firing.

Size "C" RATINGS // DATA // DIMENSIONS

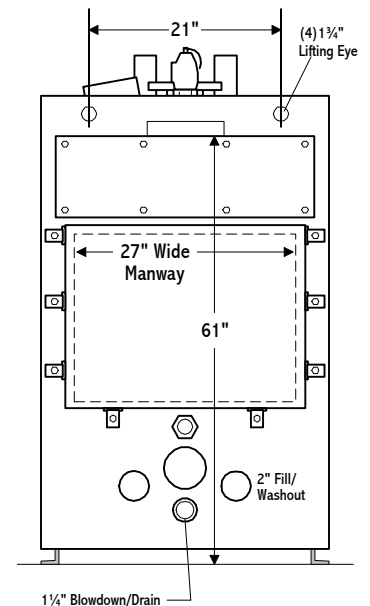
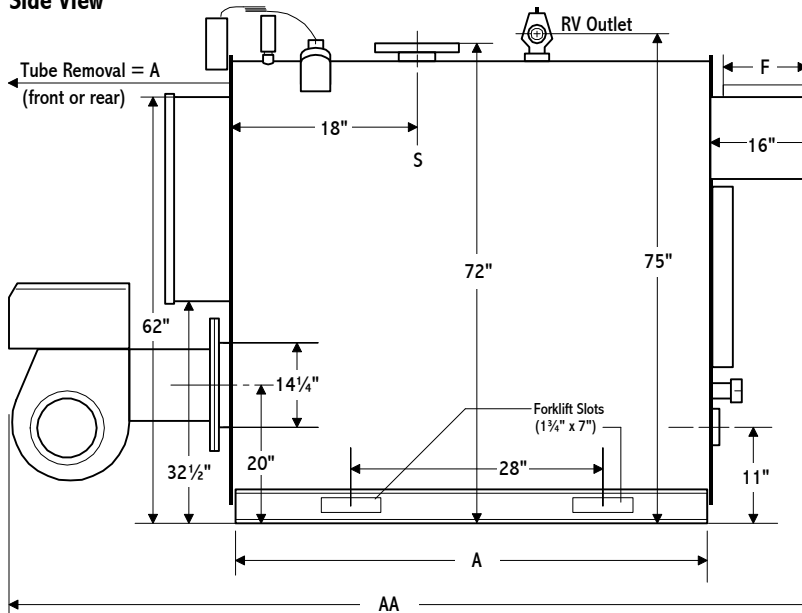
Model: HW-	2650	3000	3350
Input			
Gas (MB/CF) CFH	3190	3610	4035
Oil (140MB/Gal) GPH	22.8	25.8	28.8
Output			
MBH	2650	3000	3350
Boiler Horsepower	79	90	100
Burner Data			
Gas Burner Motor HP	2.0	3.0	3.0
Standard Gas Connection Size	2	2	2
Minimum Inlet Gas for Std Train	8"	8"	9"
Oil Burner Motor HP	2.0	3.0	3.0
Boiler Data			
Furnace Vol. (CU.FT.)	20.3	20.3	23.2
Water Cap. (Gal; Full)	272	260	301
Dry Weight (LBS)	3700	4150	4275
Flooded Weight (LBS)	5966	6312	6779
Dimensions in Inches			
A Skid Length	2	3	3
AA Overall Length	68.25	68.25	78
F Flue Connection Size	12	12	12
Drain Valve Size	1¼	1¼	1¼
RV Tapping/Outlet	1¼/1½	1½/2	1½/2
R Return Size (NPT)	4	4	4
S Supply Size (Flange)	4	4	4

Front View



30 psi construction shown. Consult factory for high pressure weights, flue connection height.

Side View



Rear View